



FOSSIL BLUFF AND SURROUNDING TRAILS

MASTER PLAN

2021 Fossil Bluff and Surrounding Trails Master Plan

Rev No.	Date	Amendments	Author	Reviewer	Approver
1	04/2021	All sections	K. Steward		
2	08/2021	Add Community Feedback Update Delivery Plan	K. Steward		

This Master Plan has been prepared by the Waratah-Wynyard Council.

The Council would like to thank all those members of the community, industry and council staff who kindly gave their time to provide input into the development of this Plan.

CONTENTS

1.	INTRODUCTION.....	5
2.	PURPOSE.....	6
3.	VISION	7
4.	OBJECTIVES	7
5.	DEMOGRAPHIC PROFILE	9
6.	LOCATION	10
7.	LAND OWNERSHIP	10
8.	PLANNING SCHEME CONTEXT.....	10
9.	CORPORATE PLANNING CONTEXT	10
10.	CURRENT USE AND INFRASTRUCTURE.....	12
11.	CONSULTATION.....	18
11.1	COMMUNITY FEEDBACK.....	18
12.	HIGHLIGHTED AREAS OF INTEREST	19
13.	THE MASTER PLAN.....	21
13.1	OVERVIEW.....	21
13.2	LAND MANAGEMENT / BIODIVERSITY ACTIONS	21
13.3	SAFETY & INFRASTRUCTURE ACTIONS	22
13.4	TOURISM & EDUCATION ACTIONS	24
14.	ACTION SUMMARY.....	27

APPENDICES

APPENDIX A: FOSSIL BLUFF REVEGETATION PLAN.....	32
APPENDIX B: DRAFT CONCEPT PLAN	33

INTRODUCTION

1. INTRODUCTION

Fossil Bluff Reserve (The Reserve) is a conservation area that overlooks Wynyard Golf Club with linking beach front, walking trails and lookout east of Table Cape. The Reserve is in the north-west of Tasmania in the town of Wynyard, within the municipality of Waratah-Wynyard.

The Reserve's conservation area is approximately 4.58 hectares in size with nearly 600m of beach front from the base of Fossil Bluff lookout to the cliffs below Inglisdale Drive. Walkways and trails in the area link the Reserve to the Inglis River Riparian Reserve (The Riparian) along Golf Links Road and into the surrounding community.

The Reserve and The Riparian are owned by the Crown while the open area at the top of Inglisdale Drive is owned by the Waratah-Wynyard Council. All developments on The Reserve or The Riparian are to be approved by Crown Land Services and the Council.

Early in 2020, Waratah-Wynyard Council were approached by Wynyard Landcare with a Fossil Bluff Reserve Management Plan for 2020 to 2025. The plan included the management of flora and fauna and advocated native revegetation and education in the Fossil Bluff Reserve. After some discussion with multiple stakeholder groups, the Council have taken the opportunity to include a Reserve Management Plan within a broader Master Plan for the Reserve(s) and surrounds in order to enhance the area and showcase its rich history through education and exploration.

Fossil Bluff and Surrounding Trails Master Plan (the Plan) details improvements for the Reserve's conservation area which overlooks the Wynyard Golf Course; Freestone Cove and foreshore; the presently unnamed bluff at the top of Inglisdale Drive; the beach area below the Inglis River Riparian Reserve along Golf Link Rd; and surrounding walking trails.



Figure 1 – Highlighted Map of Fossil Bluff and Surrounds discussed in this plan

2. PURPOSE

This plan has been developed with the intent of providing a roadmap for the future development and management of Fossil Bluff Reserve and its surrounding trails. The master plan seeks to address key opportunities and challenges experienced within the reserve to ensure Council is meeting the needs of the greater community within resource and budgetary limitations.

While this master plan builds upon a Fossil Bluff Reserve Management Plan it aims to expand upon the land management strategy for the conservation areas and develop a balanced approach to enhancing community education and appreciation for our land, biodiversity and history whilst improving the area for public use and tourism.

Whilst the master plan provides a unified future vision for the area and demonstrates a commitment to fulfilling the projects listed in this document, it is not a commitment to funds or to undertake immediate works.

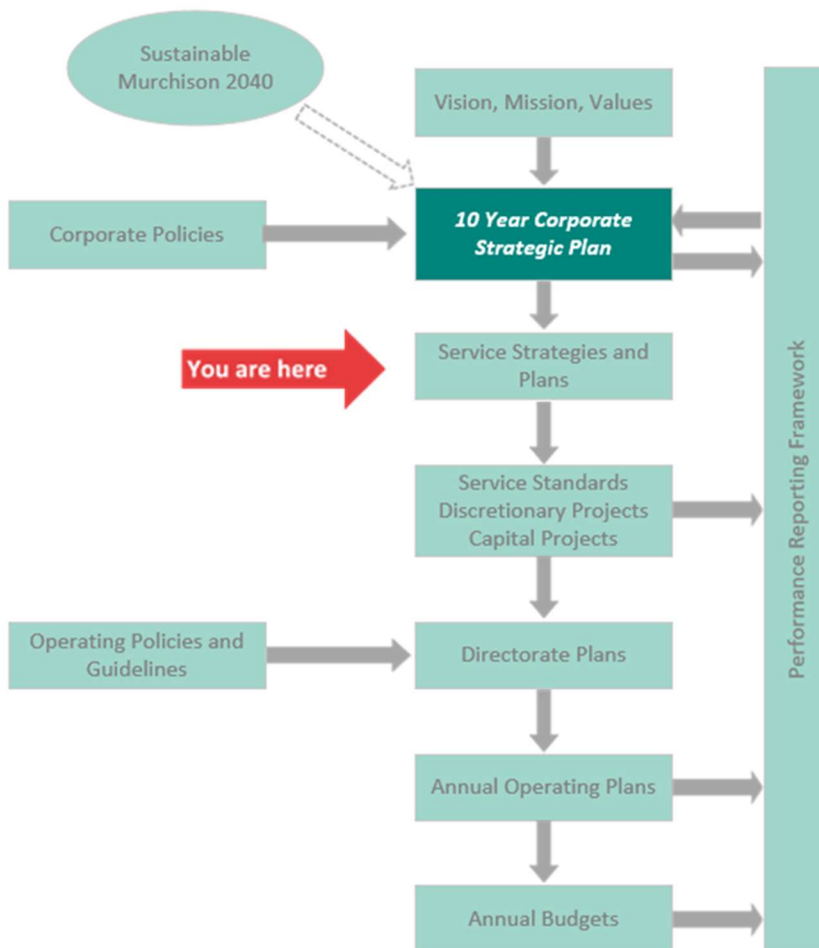


Figure 2 - Integrated Strategic Planning Framework

3. VISION

This master plan seeks to preserve Fossil Bluff Reserve's natural values, embrace its history and its use as a publicly accessible recreation area. Through active education, the aim is to inspire public interest in conservation, local history, encourage tourism and provide improved recreational facilities.

Collaboratively, Waratah-Wynyard Council, the Parks & Wildlife Service and Wynyard Landcare seek to improve the biodiversity of the Reserve through habitat regeneration and management of invasive species of flora and fauna.

The Reserve is and will continue to be an environmentally and geologically significant feature for Wynyard, growing its natural beauty and offering unique experiences for locals and visitors.

4. OBJECTIVES

The objectives of this master plan are to:

1. Protect and enhance the visual amenity and natural values of the reserve;
2. Improve the use and public value of the area;
3. Introduce a collaborative land management plan;
4. Improve pedestrian safety and enhance access to the reserve;
5. Provide infrastructure that supports the use of the reserve;
6. Inspire interest in the history and conservation of the area and provide education; and
7. Improve biodiversity through habitat regeneration and management of invasive species of flora and fauna.




BACKGROUND & CONTEXT

5. DEMOGRAPHIC PROFILE

The Waratah-Wynyard Municipality is located on the north-west coast of Tasmania and has a population of 13,578. Factors relating to gross weekly income, property mortgages and unemployment impact on the way the community may prioritise improvements within the municipality’s reserve and their ability to afford the associated costs.

There are 13,578 people living in Waratah-Wynyard and a total of 6,599 dwellings in this local government area



31%

of households have a gross income of less than \$650 per week
5.8% have a gross income of >\$3,000 per week

30%

are single (or lone) person households
68% are family households

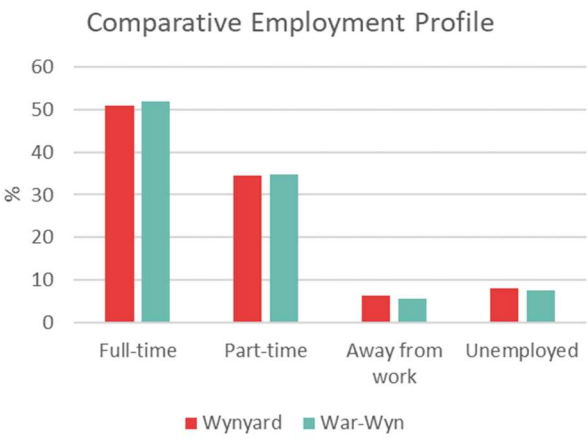
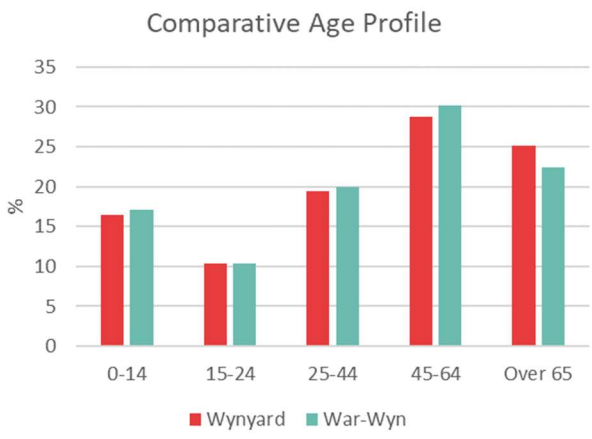


26%

are renting
71% own their own property or have a mortgage

13%

are unemployed or away from work
87% of people in the labour force are employed to some extent



6. LOCATION

The master plan covers a significant area in and around a small residential community in the North of Wynyard. There are four main locations for enhancement, these include:

- The Inglis River Reserve and walking trails located on the Northern bank of the Inglis River. This section includes portions of Golf Links Road & traffic islands;
- Freestone Cove, foreshore and associated car park;
- Fossil Bluff Reserve conservation area and associated trails; and
- Waratah-Wynyard Council owned land at the Northern end of Inglisdale Drive (Inglisdale lookout).

7. LAND OWNERSHIP

The Crown holds tenure over the public reserve spaces and Waratah-Wynyard Council have tenure over a large area of public space at the top of Inglisdale Drive.

The responsibility of management and upkeep for the reserve space is shared between Waratah-Wynyard Council and the Parks & Wildlife Service as defined by active licencing agreements with The Crown.

Any construction or improvements to existing structures in reserve spaces will require consent from The Crown before works can commence.

8. PLANNING SCHEME CONTEXT

At the time of developing this master plan, the Waratah-Wynyard Interim Planning Scheme 2013 was declared and in effect. The Reserve is classified as Zone 29.0 Environmental Management. The predominant area around the reserve is Zone 10.0 General Residential and Zone 18.0 Recreation.

9. CORPORATE PLANNING CONTEXT

Council's corporate planning is determined through the 10-Year Corporate Strategic Plan. At the time of developing this master plan, the Waratah-Wynyard Council Corporate Strategic Plan 2017-2027 applied, which is formed around seven themed goals:

1. Leadership and Governance;
2. Organisational Support;
3. Connected Communities;
4. Community Recreation and Wellbeing;
5. Economic Prosperity;
6. Transport and Access; and
7. Environment.

The specific strategic plan implications relevant to this master plan are contained in the table below.

Goal 3: Connected Communities	
Desired Outcomes	
3.1	Waratah-Wynyard is a modern community—moving forward but not forgetting where it started.
3.2	We listen and engage with our community in decision making.
3.3	Our natural and built environment aids the community with an active and healthy lifestyle.
Our Priorities	
3.1.1	Deliver planning for activation through effective urban design and planning that promotes liveability, social gathering and connectedness, and which recognises and celebrates local history.
3.1.2	Promote and strengthen community safety to retain and attract families to live and recreate in Waratah-Wynyard.
3.2.1	Deliver engagement strategies that adapt to community needs to ensure effective communication and collaboration.
3.3.2	Facilitate activities and events that promote inclusion, health, safety and a sense of place.
Goal 4: Community Recreation and Wellbeing	
Desired Outcomes	
4.1	Our community is welcoming and supportive.
4.2	Our community values, encourages and supports physical, social and cultural activities.
4.3	We provide recreational opportunities to the community for all ages and abilities.
4.4	Our community enjoys access to visually appealing safe spaces and facilities for recreation.
Our Priorities	
4.1.1	Collaborate with community organisations that provide recreation opportunities to our community.
4.2.1	Focus on the value of recreation in promoting the health and wellbeing of our community.
4.3.1	Commit to ongoing recreation and open space planning to ensure evidence-based decisions are made about the role of Council and its partners in recreation.
4.4.1	Employ land-use planning strategies to promote connectivity and equity in the allocation or use of open space for recreation purposes.
4.4.2	Provide and maintain quality and safe places and spaces for physical, social and cultural activities, including shared and multi-use facilities where possible.

Goal 7: Environment	
Desired Outcomes	
7.1	Council and the community minimise its resource consumption and carbon footprint.
7.2	The community understands its vulnerabilities and strengths when it comes to climate change adaptation and resilience.
7.3	Our natural environment, unique surroundings and community assets are future ready in a changing climate.
7.5	Stewardship of our land, water and marine ecosystems respects past, present and future generations.
Our Priorities	
7.1.2	Advocate for effective environmental management and contribute to regional, state, and national climate change initiatives.
7.2.1	Support and foster community led adaption and initiatives.
7.3.1	Facilitate education and awareness of climate change risks to the community and property owners.
7.3.2	Embed environmental considerations and potential climate impacts in Council's infrastructure planning and decision making.
7.3.3	Innovative and sustainable design is encouraged through forward thinking and planning.
7.5.1	Protect, enhance and recover biodiversity through forward thinking and planning.
7.5.2	Mitigate biosecurity risks through landscape restoration and industry collaboration.

10. CURRENT USE AND INFRASTRUCTURE

Frequented by Fossil Bluff residents, locals and visitors, the Fossil Bluff Reserve and surrounding trails are used for walking nature trails, viewing geological wonders, picnicking and general recreation. This region of Wynyard also holds cultural significance for the local Aboriginal community. The site's potential as a tourism drawcard has not been fully realised.

Currently, there is a mixed standard of infrastructure across the area. Metal-style furniture has been installed at the foreshore while the reserve areas have treated pine and recycled material seating. Major infrastructure in the planned improvement zones includes; a bitumen road, concrete paths, a car park, bitumen and gravel walkways and ancillary furniture such as park benches and picnic tables.

In 2020 Wynyard Landcare, a group of environmental management enthusiasts, prepared a Fossil Bluff Reserve Management Plan that discussed strategies to enrich the biodiversity of the conservation area and educate the community. The plan considered revegetation, control of invasive weeds, fire management, track maintenance, education and research activities. Wynyard Landcare, Parks & Wildlife and Waratah-Wynyard Council have since worked collaboratively to reach agreement on the care and conservation of Fossil Bluff Reserve.

This master plan has been developed based on the above with timing factored into the works plan for maintenance and revegetation of the Fossil Bluff Reserve conservation areas.

Site Photos: Existing Conditions

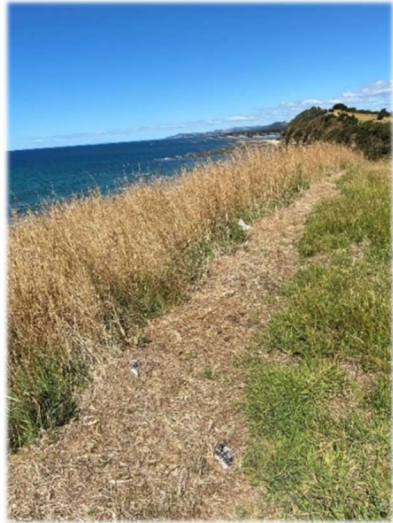
Freestone Cove & Foreshore



Walking Trail from Freestone Cove Foreshore to Fossil Bluff Reserve lookout



Inglisdale Lookout and Walking Trail



Fossil Bluff Reserve Trail / Inglis River Reserve Linking Trail & Golf Links Road



Fossil Bluff Reserve Trail / Inglis River Reserve Linking Trail & Golf Links Road



ENGAGEMENT

11. CONSULTATION

While drafting this master plan, there was consultation with three key stakeholder groups; Wynyard Landcare, Parks & Wildlife Services and a palawa community liaison. Communication with these groups is ongoing while the plan is in development and into the implementation phase.

11.1 COMMUNITY FEEDBACK

The draft master plan was published on the Council website and the community was invited to provide feedback between 1 July and 29 July 2021. Both residents and assisting stakeholder groups received early notification from 22 June.

The consultation process and the draft plan were advertised through:

- Council's social media and website;
- Distribution of plan to supporting stakeholder groups; and
- Letter drop to residences in the Fossil Bluff community including visual concept plan.

During this period, Council received 70 submissions:

- 28 Emails;
- 26 Online Feedback Forms;
- 8 Letters; and
- 8 other methods including face-to-face feedback and public questions to council.

Common themes were as follows:

- There were views both for and against an amenities block, but it was widely suggested that the block be moved from the proposed location. Other locations suggested by the community were:
 - on the grassed area closer to the picnic space;
 - at the boat ramp near the Table Cape Bridge;
 - multiple locations nearer the carpark; or
 - further up the walk to the Bluff, away from homes with a 'dug into the hillside' look, camouflaged by greenery.
- Most of the community would prefer not to change Golf Links Road but rather focus on improving road safety in the area including replacing the missing speed signs, addressing the visibility of one-way signage and consideration of other speed mitigation devices such as humps or chicanes.
- Revegetation with suitable, appropriately sized plants with regular maintenance. Native ground covers, small flowering shrubs and native grasses were preferred for the foreshore.

- Respondents were split in their feedback requests regarding footpaths, tracks and trails for Fossil Bluff and included:
 - maintenance and repair of current infrastructure as a priority;
 - requests for more significant upgrades to current tracks and trails such as the walkway between 6 and 8 Inglisdale Drive which is currently grassed;
 - some requesting a shared path along Golf Links from Table Cape Bridge; and
 - others proposing additional walking/educational trails be created.
- The proposed lookout at Inglisdale Drive was generally accepted though there was some concern over cars parking on grass or getting bogged, vehicular access to the viewing area, litter and the types of materials used for 'construction' of the lookout.

Minor themes also recognised were:

- Issues with "free campers" or vehicles staying for long periods. These were raised as for the Golf Links Road parking concept, the foreshore and Inglisdale lookout car park.
- Though the idea of interpretive and directional signage was mostly welcomed, there was concern over lack of detail in placement and that too many signs would "constitute visual pollution and detract from the natural beauty".
- Foreshore safety issues were also raised including safety signs for falling rocks, barriers to stop vehicles driving onto the foreshore and beach and other behavioural issues believed to increase with the availability of an amenity.
- Additionally, there were some comments regarding; mobility-impaired access, outdoor furniture and the picnic area and requests for a small-scale playground or slide.

All feedback received has been considered prior to finalisation of the plan.

12. HIGHLIGHTED AREAS OF INTEREST

Initially, there were seven areas of interest (or themes) that we looked at as a starting point given the current uses, potential improvements and collaborative enhancement options. After due consideration, five overarching themes prevailed as most appropriate to focus on:

1. Land Management / Biodiversity;
2. Geological Interests;
3. Tourism, Lookouts & Trails;
4. Aboriginal & Cultural Heritage; and
5. Historical Interests.

These five themes were broken down further into three areas of action due to the significant crossover in identified outcomes, they are:

- Land Management / Biodiversity;
- Safety & Infrastructure; and
- Tourism & Education.

THE MASTER PLAN

13. THE MASTER PLAN

13.1 OVERVIEW

The master plan was created to put a strategy in place to facilitate the rehabilitation and management of flora and fauna in the Reserve including fire management, removal of invasive species and maintenance of the Bluffs. Additionally, highlight the rich history and create educational opportunities by increasing the visibility of historical and geological sites and other points of interest to attract tourists to the area.

The aim is to develop a well-balanced approach to enhance community education and appreciation for our land, biodiversity and history whilst improving the area for public use and tourism. Due consideration is given to current value and use as well as recreational needs and residential concerns.

13.2 LAND MANAGEMENT / BIODIVERSITY ACTIONS

Key Actions Progressed from Themes

- **Land Management/Biodiversity:** Wynyard Landcare, in consultation with the Parks & Wildlife Service and Waratah-Wynyard Council, have a planting and maintenance plan for the next five years. There is an in-principal agreement in place for rehabilitating the Reserve. Implementation will include establishing planting and maintenance practices for the conservation area(s).

Waratah-Wynyard Council, Parks & Wildlife Service and Wynyard Landcare will maintain their relationships and establish a scope of service for each group. Regular meetings to build a rolling 12-month schedule of works will allow for ample notification to residents and locals. Additionally, based on public feedback, the revegetation plan (particularly for the foreshore) will carefully consider height, tolerance to foreshore conditions, be low maintenance and native varieties.

Community engagement will be instrumental in the education process, providing a timeline, location and purpose as well as details on vegetation. The knowledge and the support of the community will increase the success of the Reserve's rehabilitation and reduce instances of vandalism. Recognising the financial implications of this behaviour and having an appropriate response strategy in place will also assist in the success of this plan.

Additionally, Waratah-Wynyard Council will investigate the opportunity to expand the licence area on the Bluff to allow a formal linkage of the Bluff trail to a single standard.

- **Aboriginal and Cultural Heritage:** In compiling the master plan, Waratah-Wynyard Council engaged with a local palawa representative from the Parks and Wildlife Service. During the discussion, there was talk about the revegetation of Reserve and portions of Freestone Cove Foreshore by Wynyard Landcare. On advice from the cultural liaison, Waratah-Wynyard Council will facilitate the conversation between the Aboriginal community and Wynyard Landcare to help in addressing a possible bush food trail and a fire abatement plan.

Actions:

- 1.1. Collaborate with relevant stakeholders to develop a rolling 12-month planting, weed management and maintenance schedule and establish working boundaries for each stakeholder group.
 - 1.2. Facilitate collaboration between Wynyard Landcare and the palawa working group (including the Tasmanian Aboriginal Centre (TAC) and the local Aboriginal community) to investigate the possibility of a bush food trail and implementation plan.
 - 1.3. Establish and set in place a strategy to deal with acts of vandalism against active revegetation efforts in the Fossil Bluff area.
 - 1.4. Consult with the Parks and Wildlife Service about expanding Council's lease area within the Fossil Bluff Reserve's conservation area to include the linking trail from Golf Links Road to the lookout.
-

13.3 SAFETY & INFRASTRUCTURE ACTIONS

Key Actions Progressed from Themes

- **Tourism, Lookouts & Trails:** The master plan began with the rehabilitation of the Fossil Bluff conservation area in mind. The Reserve is currently in a declining condition, with invasive weeds and tall grass prevalent. Other areas of concern include; trip hazards on trails, accessibility for mobility-impaired people and concern over flood and erosion near lower Golf Links Road.

The Reserve

Of concern are stairs on Reserve trails that, although addressing steep inclines, may have been installed by individuals outside of Council or Parks & Wildlife Service authority. These constructions require evaluation to assess whether they satisfy minimum safety standards. Elsewhere, along the bank of the Inglis River near lower Golf Links Road, paths are either non-existent, steep or not user-friendly.

Waratah-Wynyard Council is currently licenced to maintain Freestone Cove Foreshore and the walking path that leads to the peak of the Bluff on the Northern side. It is proposed that Waratah-Wynyard Council consult with Parks & Wildlife Service to seek an extension to the current licence to include the Eastern portion of the trail ending at Golf Links Road. The additional licencing would allow the track on Fossil Bluff to be assessed as a whole and brought to a single standard.

Footpaths

Repairs to footpaths in the Fossil Bluff community will be conducted within their repair schedules unless immediate repair is deemed necessary during the Footpath Service Level Review. Further, footbridges along the Inglis Walking Track are due for replacement over the next two years. The requirement for additional repair works to the track will be determined during the review of Council assets.

Upgrades to a walkway between 6 and 8 Inglisdale Drive and an investigation into options for a shared pathway along Golf Links Road have been requested as part of the community feedback.

Golf Links Road

Any changes to Golf Links Road for dual lanes will be put on hold until an examination of the lower section of Golf Links Road for flood and erosion damage can be completed. Recommendations from an erosion investigation will be addressed. Based on community consultation, a realignment is not favoured; therefore, further consultation will occur should major repairs be deemed necessary to address safety concerns.

Several road safety and road user concerns were raised during the community consultation period as part of Golf Links Road feedback. Most responses focused on the speed and visibility of one-way directional indicators and the safety of the road for drivers and pedestrians.

Inglisdale Drive & Freestone Cove Foreshore

Additional infrastructure to improve the recreational spaces at the top of Inglisdale Drive and Freestone Cove Foreshore is recommended. A lookout at the top of Inglisdale Drive may be formalised in consultation with residents as the Bluff already serves as a known whale-watching viewing area. The panoramic view with linked walking track and historical values further lend themselves to public interest. Design, safety features, interpretive signage, placement of informal parking constructed in materials suitable to local conditions and vehicular access to grassed areas will all require due consideration to minimise impact to residents on the street.

There are other improvement opportunities near the beach at Freestone Cove Foreshore. Increasing seating, sheltered picnicking facilities and installing an amenities block would enhance useability for the whole area. The closest public amenities to the Fossil Bluff walking trails are at Gutteridge Gardens, nearly 3km away from Fossil Bluff by foot. The addition of an amenities block in this location will effectively link the Reserve trails to the existing bridge to bridge walks, adding 2km of nature trails with the benefit of comfort stops and hydration points in multiple locations. This position would also benefit tour groups who may otherwise bypass Fossil Bluff because of the lack of amenities.

Community feedback has suggested an option to build an amenity block placed to look as though built into the hillside, camouflaged and with multi-abled accessibility.

Actions:

- 2.1. Undertake detailed planning and review on Council's assets in the Fossil Bluff and Surrounds area to ensure they meet current safety standards.
 - 2.2. Review gaps in the urban footpath network as part of the Footpath Service Level Review.
 - 2.3. Any changes to Golf Links Road to dual lanes will be put on hold until an examination of the lower section of Golf Links Road for flood and erosion damage can be completed (refer action 2.4).
 - 2.4. Investigate flooding and erosion damage to areas near lower Golf Links Road.
 - 2.5. Investigate requirement for added traffic management needs in the area.
 - 2.6. Explore requirement for pedestrian infrastructure to connect the Inglis River walking track with the broader walking tracks and trails within Fossil Bluff and Surrounds.
 - 2.7. Formalise a second lookout at Inglisdale Drive.
 - 2.8. Enhance the recreational use of Freestone Cove Foreshore by creating an additional picnic space.
 - 2.9. Explore suggested alternative public toilet site with a built into the hillside look so as to provide a suitably camouflaged and accessible option to meet the need of the area.
-

Design Features for These Actions (reference only)



13.4 TOURISM & EDUCATION ACTIONS

Key Actions Progressed from Themes

- Tourism, Lookouts, Trails:** The purpose of this master plan is not only to improve the quality of Fossil Bluff amenities for residents but to also draw attention to this incredible location. Waratah-Wynyard Council must thoughtfully promote Fossil Bluff and surrounds, highlighting the distinct qualities, history, geology, heritage and conservation in addition to the stunning views and hiking trails.

Interactive interpretive signage (e.g. tactile or QR links), in conjunction with promotional material, should be used to educate the community and visitors. The technological aspects should not detract from the information provided; the digital interactive content should be an extension.

When considering digital provisions such as QR codes linking to content or other mobile applications, investigate compatibility options. Ideally, connectivity with the technologies used in nearby Councils could enable visitors and locals alike to follow knowledge and activity trails across municipalities without interruption or fragmented information.

- Historical Interests:** As part of the Discover Wynyard Project, several historical points of interest (POIs) were identified across Wynyard. The POIs at Fossil Bluff Reserve include the First Settlement and the Tramway & Breakwater; visible from the Bluff are Wynyard Wharf and Camp Creek.

While exploring the historical interests of the area, consideration was given to how to share this history with the public. Discussions highlighted an opportunity to include artistic interpretations of local legends and other historical articles specific to the Fossil Bluff area (e.g. *Wynyardia bassiana*) to underpin the stories gathered through the art project.

Both artists and historians will need to be identified and engaged from the conceptualisation stage. Waratah-Wynyard Council will engage with the Public Art Advisory Group (PAAG) to consult and advise on possible public art opportunities for this plan. The form of artistic rendering will be determined on a case by case basis, with the piece's final location firmly in mind. Interpretive signage with interactive capabilities, in combination with artist representations, will create a rich visitor experience.

- **Geological Interests:** The Wonders of Wynyard Geological Trail is a project supported by Waratah-Wynyard Council. The purpose is to establish several educational walking trails between Doctors Rocks and Fossil Bluff. There will be nine (9) walks in total, with three (3) in the vicinity of Fossil Bluff alone. These walks will take individuals and groups on a prehistoric journey of this North-West section of Tasmania.

As part of the master plan, the walks at Fossil Bluff could be one of the first sections of the Geological Trail project in place. A crucial component in delivery will be interpretive signage as part of the educational journey. This will include interactive elements such as QR codes linking to website information and will satisfy both the casual walker and the more serious geological information seekers.

It is important to note that there are accessibility issues to consider before implementation. Depending on the start and finish points, some walks may require permissions before implementation, e.g. Wynyard Golf Course sea frontage. Access to some walks may be tide dependant; therefore, consideration of content to enhance the experience is especially important for times of inaccessibility.

- **Aboriginal & Cultural Heritage:** A vital Aboriginal community remains in the Wynyard area and continues to have close ties to the land, particularly Fossil Bluff. Engaging with the Parks & Wildlife Service palawa representative provided significant insight into how best to involve the local Aboriginal community in the planning process.

There will be a working group made up of local members endorsed by the local community to ensure content is unbiased. This working group intends to provide ideas, assistance and information for inclusion in the master plan. This collaborative approach aims to capture a complete view of the meaning and use of Fossil Bluff, both historical and contemporary, in a respectful and meaningful way.

Actions:

- 3.1. Develop an engaging marketing plan to continually promote Fossil Bluff Reserve and surrounding trails.
 - 3.2. Collaborate with the Public Art Advisory Group (PAAG) to develop a plan of artistic interpretations to highlight; the history, geology, cultural heritage, flora and fauna of the area.
 - 3.3. Work with the palawa liaison and community working group to ensure cultural consideration is included within all elements of signage.
 - 3.4. Install interactive interpretive signage (including considering the use of QR codes) which aligns with the outcomes of the "Discover Wynyard" and "Wonders of Wynyard Geological Trail" projects.
 - 3.5. Install walking track directional signage which aligns with Council's Signage Strategy.
 - 3.6. Consult with the Parks and Wildlife Service, the Wynyard Golf Club and other relevant stakeholders about placing directional lighting into trees at the edge of Wynyard Golf Course, across from the wharf.
-

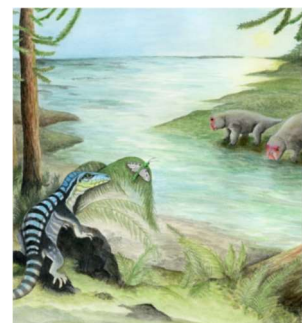
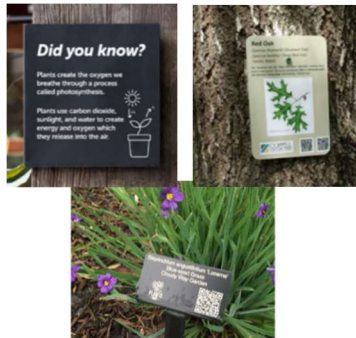
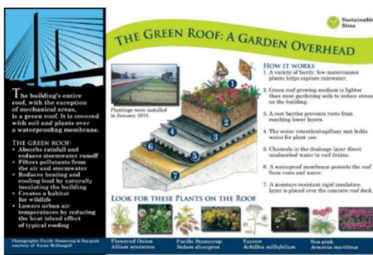
Design Features for These Actions (reference only)



Tactile model, Timpanogos Cave NM



Tactile model, WWII Valor in the Pacific NM



14. ACTION SUMMARY

Note: The five-year plan is a prediction of completion time only and is subject to change.

ACTIONS		YR 1 22/23	YR 2 23/24	YR 3 24/25	YR 4 25/26	YR 5 26/27	ESTIMATED INITIAL OUTLAY	ESTIMATED ANNUAL COSTS
1. LAND MANAGEMENT / BIODIVERSITY								
1.1	Collaborate with relevant stakeholders to: <ul style="list-style-type: none"> Develop a rolling 12-month planting, weed management and maintenance schedule which also considers plant type and signage. Establish working boundaries for each stakeholder group e.g. fire abatement/slashing. Ensure foreshore planting is careful of height, tolerance of foreshore conditions and be low maintenance. 						-	-
1.2	Facilitate collaboration between Wynyard Landcare and the palawa working group (including the Tasmanian Aboriginal Centre (TAC) and the local Aboriginal community) to investigate the possibility of a bush food trail and implementation plan.						-	-
1.3	Establish and set in place; a strategy to deal with acts of vandalism against active revegetation efforts in the Fossil Bluff area.						-	-
1.4	Consult with the Parks and Wildlife Service about expanding Council's lease area within the Fossil Bluff Reserve's conservation area to include the linking trail from Golf Links Road to the lookout.						-	-

ACTIONS		YR 1 22/23	YR 2 23/24	YR 3 24/25	YR 4 25/26	YR 5 26/27	ESTIMATED INITIAL OUTLAY	ESTIMATED ANNUAL COSTS
2. SAFETY & INFRASTRUCTURE								
2.1	Undertake detailed planning and review on Council's assets in the Fossil Bluff and Surrounds area to ensure they meet current safety standards: <ul style="list-style-type: none"> Scheduled Repairs (ongoing). Carry out urgent repairs based on review. Explore multi-abled accessibility options for the area. 						TBD	TBD
2.2	Review gaps in the urban footpath network as part of the Footpath Service Level Review. <ul style="list-style-type: none"> Explore options for a shared pathway along Golf Links Road safe for mobility-impaired and other wheels access. (Cost to be determined). 23/24 - upgrade path between 6-8 Inglisdale Drive. 						\$31,000 (23/24 works only)	\$1,550.00 (23/24 works only)
2.3	Any changes to Golf Links Road will be put on hold until an examination of the lower section of Golf Links Road for flood and erosion damage can be completed (refer action 2.4).						TBD	TBD
2.4	Investigate flooding and erosion damage to areas near lower Golf Links Road. <ul style="list-style-type: none"> Address recommendations as needed. 						\$14,500.00	-
2.5	Investigate requirement for added traffic management to mitigate speeding / hooning issues in the area including a review of directional signage for size.						TBD	TDB
2.6	Explore requirement for pedestrian related infrastructure to connect the Inglis River walking track with the broader walking tracks and trails within Fossil Bluff and Surrounds.						TBD	TBD

ACTIONS		YR 1 22/23	YR 2 23/24	YR 3 24/25	YR 4 25/26	YR 5 26/27	ESTIMATED INITIAL OUTLAY	ESTIMATED ANNUAL COSTS
2.7	Formalise a second lookout at Inglisdale Drive: <ul style="list-style-type: none"> 23/24 – Consult with residents and other stakeholders before undertaking design and planning which includes consideration of an informal parking area, vehicle access barriers, safety fencing if necessary and associated signage (refer action 3.4). 24/25 – Delivery of new lookout and associated infrastructure. 						\$130,000.00	\$10,667.00
2.8	Enhance the recreational use of Freestone Cove Foreshore by creating additional picnic spaces: <ul style="list-style-type: none"> Install picnic shelter, tables, seating, bubbler and bins. 						\$27,000.00	\$1,350.00
2.9	Explore suggested alternative public toilet site with a built into the hillside look so as to provide a suitably camouflaged and accessible option to meet the need of the area; <ul style="list-style-type: none"> consider heritage, camouflaging options and environmentally friendly design features. 						TBD	TBD
3. TOURISM & EDUCATION								
3.1	Develop an engaging marketing plan to continually promote Fossil Bluff Reserve and surrounding trails.						-	-
3.2	Collaborate with the Public Art Advisory Group (PAAG) to develop a plan of artistic interpretations to highlight; the history, geology, cultural heritage, flora and fauna of the area.						-	-
3.3	Work with the palawa liaison and community working group to ensure cultural consideration is included within all elements of interpretive signage (refer action 3.4).						-	-

ACTIONS		YR 1 22/23	YR 2 23/24	YR 3 24/25	YR 4 25/26	YR 5 26/27	ESTIMATED INITIAL OUTLAY	ESTIMATED ANNUAL COSTS
3.4	Install interactive interpretive signage (including considering the use of QR codes) which aligns with the outcomes of the "Discover Wynyard" and "Wonders of Wynyard Geological Trail" projects. *Timeframes subject to change, dependant on Public Arts Committee decisions and funding for Geological trail outcomes.						-	-
3.5	Install walking track directional signage which aligns with Council's Signage Strategy. <ul style="list-style-type: none"> To be located discreetly on tracks and/or where tracks separate. 						\$20,000.00	\$1,333.00
3.6	Consult with the Parks and Wildlife Service, the Wynyard Golf Club and other relevant stakeholders about placing directional lighting into trees at the edge of Wynyard Golf Course, across from the wharf.						\$6,000.00	-
							\$228,500.00	\$14,900.00

APPENDICES

Appendix A: Fossil Bluff Revegetation Plan

Fossil Bluff Reserve - Proposed Area Usage

This proposal has been prepared after preliminary discussions between Waratah-Wynyard Council and Wynyard Landcare representatives at Fossil Bluff.

The aim of this meeting was to discuss the uses of different areas of the Fossil Bluff reserve that are Council leased from Crown.

The six areas for discussion have been identified on the following diagram. Also discussed was how to move forward from the agreed actions.

Identified was:

- the requirement for funding for council sponsored capital works, any works requiring funding will be put forward for capital works funding in the next financial year.
- Time allowed for Council to propagate as many of the plants required
- Council wish to retain areas that can be serviced by mowers / slashers as open land. Planting areas restricted to the steeper areas where mowers can't access.

Area 1:

- Currently grown over with Boobialla, Blackberry etc. Plan forward to slash with arm mounted mower during spring/summer slashing season then re-assess.

Area 2:

- This area was recently cleared out due to the area being sprayed by unknown persons killing the majority of the vegetation.
- Some of this area will be made into garden bed, the remainder sown with lawn.

Area 3:

- Currently this area is vegetated but is very overgrown & unsightly, but the area may be salvageable with some careful pruning.
- Suggestion was made that the pruning could be undertaken by TAFE students if this isn't possible vegetation removal & re-planting to occur.

Area 4:

- Suggested by the Landcare members that a 1-meter wide garden bed could be installed. this would alleviate issues with mowing against a rock wall that has a 1-meter drop to the adjacent path. Spray program before implementation before planting.

Area 5:

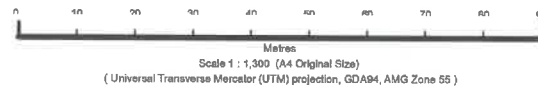
- Contains a lot of old declining small trees, Kunzea, Melaleuca etc.
- Prune to salvage what is possible however removal, weed control & re-planting may be a viable option.

Area 6:

- Very untidy area also very steep.
- Plan forward to assess how much & how often we can safely slash / mow with arm mounted mower during spring/summer slashing season. There is also some scope for ride on mowers to slightly increase the amount of mowing they can safely do. Any areas that we can't reach will be offered up for appropriate planting.



FOSSIL BLUFF PLANTING LOCATIONS



This publication has been produced by the Waratah Wynyard Council and is based on cadastral data provided with the permission of the Department of Primary Industries & Water © The State of Tasmania. While every care is taken to ensure the accuracy of this data, the Department of Primary Industries & Water and Waratah Wynyard Council make no representations or warranties about its accuracy, reliability, completeness or suitability for any particular purpose and disclaims all responsibility and all liability (including without limitation, liability in negligence) for all expenses, losses, damages (including indirect or consequential damage) and costs incurred by any person who relies on this information, whether or not such reliance is reasonable, and whether or not the information is accurate or incomplete in any way and for any reason.



Printed On: 13 Sep 2021



saltbush, coastal beardheath, pig face, corea

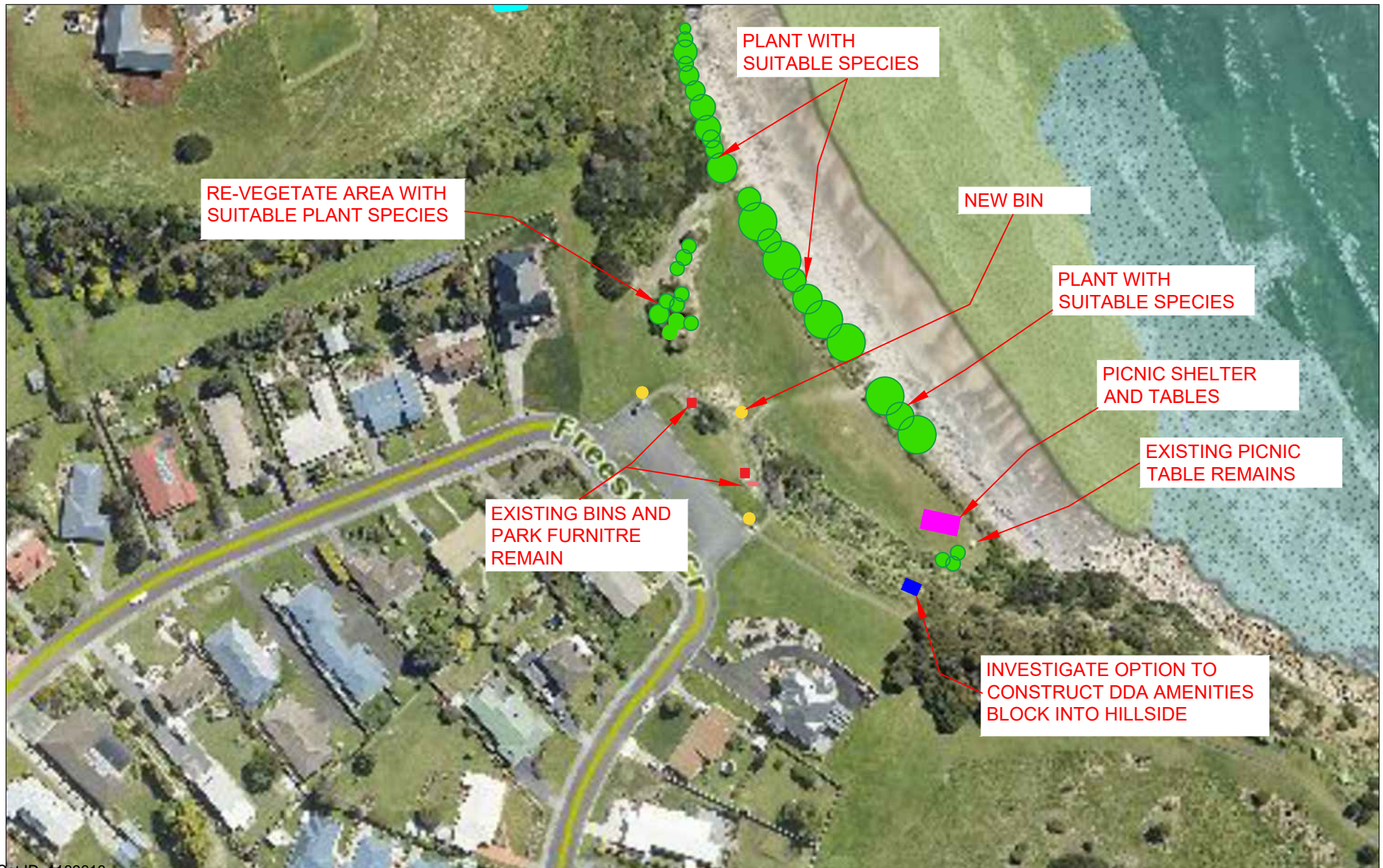
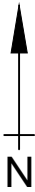
silver banksia, hobbush, bower spinach

grevilla, flax lily

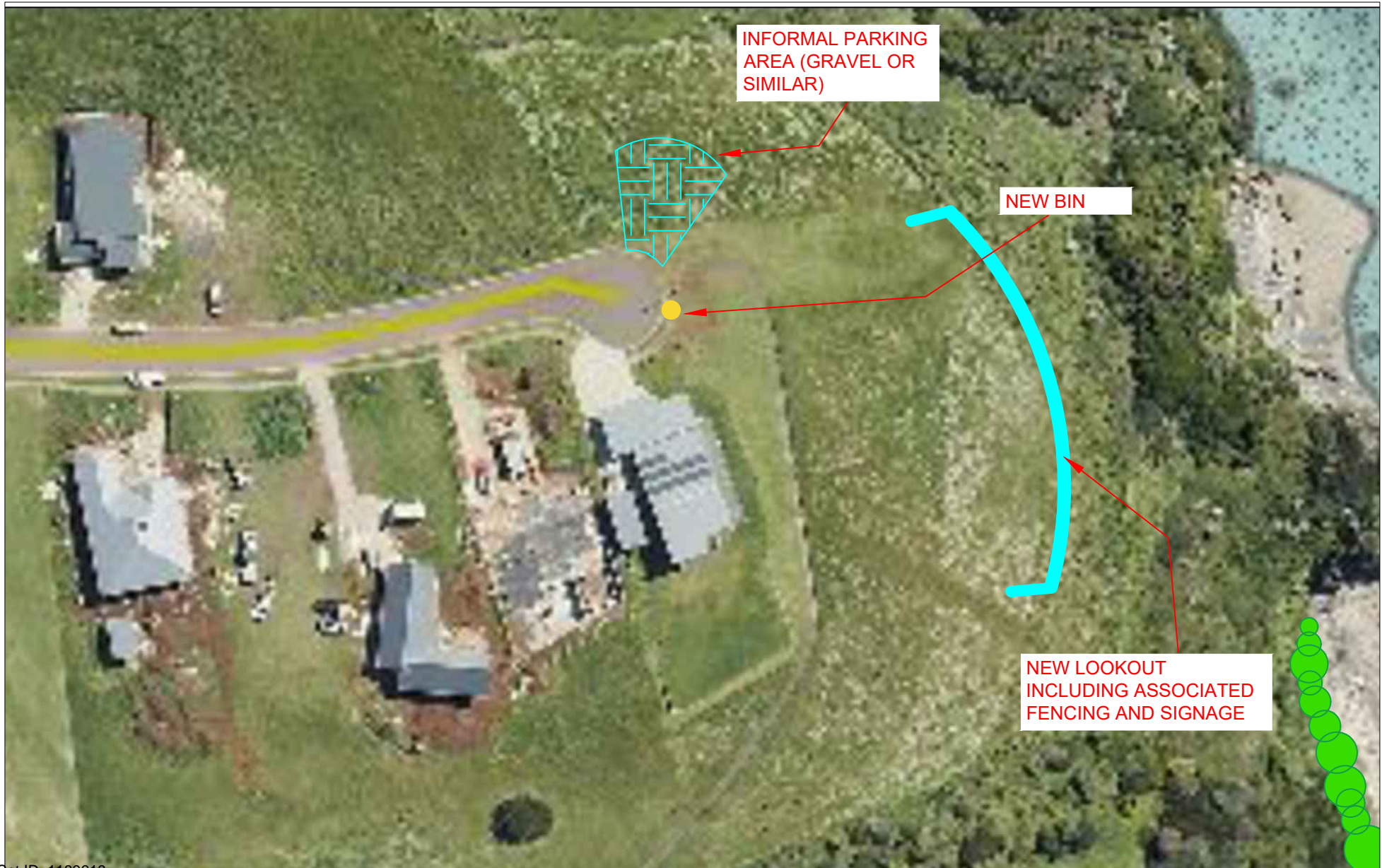


Appendix B: Concept Plan

FOSSIL BLUFF AND SURROUNDING TRAILS CONCEPT PLAN (1 OF 3) FREESTONE COVE FORESHORE



FOSSIL BLUFF AND SURROUNDING TRAILS CONCEPT PLAN (2 OF 3) INGLISDALE DRIVE LOOKOUT



FOSSIL BLUFF AND SURROUNDING TRAILS CONCEPT PLAN (3 OF 3) INGLIS RIVER / GOLF LINKS ROAD

